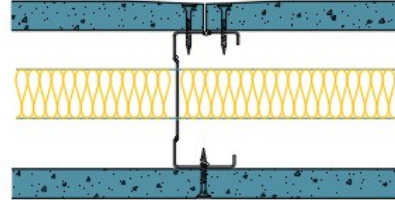


70-B-54F(25) - SPEEDLINE System Data Sheet - Version V1 (24-10-23)

SPEEDLINE 70mm 'C' Stud Partition @600mm Ctrs,
with BG Gyproc 15mm SoundBloc F each side,
25mm APR



System Performance Breakdown

Fire Resistance:

BS476 Part 22:1987:

Test Ref & Date or Applied Ref & Report:

Max Height:

Thickness:

Duty Grade: BS 5234: Part 2:1992:

Sound Insulation:

60/60 Minutes (Integrity/Insulation).

BMT/FEP/F14106 - BRE Report P102396-1011A

Refer to Speedline Specification Clause

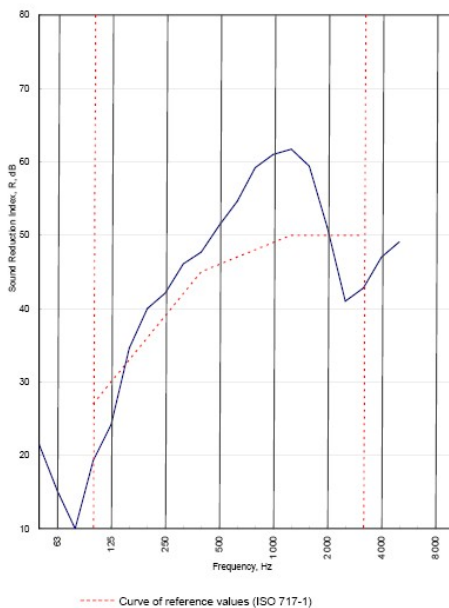
102 mm. (At Base Track, Excluding Finishes)

Heavy - Annexes A-F

46 R_w dB, Date Tested or Assessed Against - 70-B-54(25)

Test Code:	H17487AA
Test Date:	14/07/2011

Freq. Hz	R dB
50	21.5
63	15.2
80	10.0
100	19.3
125	24.2
160	34.6
200	40.0
250	42.1
315	46.1
400	47.7
500	51.3
630	54.6
800	59.2
1 000	61.0
1 250	61.7
1 600	59.4
2 000	51.0
2 500	41.0
3 150	42.8
4 000	47.0
5 000	49.1
6 300	
8 000	
10 000	



Rating according to BS EN ISO 717-1:1997			
R_w (C;Ctr) = 46 (-3;-8) dB			
Max dev. 9 dB at 2 500 Hz			
Evaluation based on laboratory measurement results obtained by an engineering method:	$C_{50-3150}$ = -6 dB	$C_{50-5000}$ = -5 dB	$C_{100-5000}$ = -2 dB
	$C_{w,50-3150}$ = -17 dB	$C_{w,50-5000}$ = -17 dB	$C_{w,100-5000}$ = -8 dB

TESTED AT ONE OF THE UKAS ACCREDITED LABORATORIES BELOW

B.T.C (H-Ref on Graph)	
B.R.E	
AIRO	
S.R.L	

Customer: Metsec plc Hepsec Division

BTC 17487A: Page 9 of 11

